

1. Safety Precautions and Warnings

To Prevent personal injury or damage to vehicles or the Car Tool, read this instruction manual first and observe the following safety precautions.

1. When an engine is running, it produces carbon monoxide, a toxic and poisonous gas. To prevent serious injury or death from carbon monoxide poisoning, operate the vehicle **ONLY** in a well-ventilated area.
2. To protect your eyes from propelled objects as well as hot or caustic liquids, always wear approved safety eye protection.
3. Put transmission in PARK (for automatic transmission) or NEUTRAL (for manual transmission) and make sure the parking break is engaged.
4. Connecting or disconnecting test equipment when the ignition is ON can damage test equipment and the ignition OFF before connecting the Code Reader to or disconnecting the Code Reader from the vehicle's Data Link Connector(DLC).
5. To prevent damage to the on-board computer when taking vehicle electrical measurements, always use a digital multi meter with at least 10megOhms of impedance.
6. Keep the car Tool clean, dry and free from oil, water and grease. Use a mild detergent on a clean cloth to clean the outside of the Scan Tool, when necessary.

2. General OBD-II Information

2.1 What is OBD-II?

OBD-II stands for On-Board Diagnostics, II generation. It is a set of documents issued by SAE and ISO, which describe the interchange

of digital information between on-board emission-related Electronic Control Units (ECUs) of road vehicles and an OBD-II scan tool. OBD-II also commonly refers to the physical on-board diagnostic system of a vehicle, which consists of an ECU (or multiple ECUs), Malfunction Indicator Light(MIL), Diagnostic Link Connector (DLC), and the wiring that connect the different elements.

2.2 How do I know whether my car is OBD-II compliant?

There are several ways.

1996 or newer model year vehicle sold in the United States

United States legislation requires all cars and light trucks model year (MY) 1996 and newer to be OBD-II compliant. More information is available on the [EPA's website](#).

2001 or newer model year gasoline vehicle sold in the European Union

Commission Directive 70/220/EEC, Annex I:

Vehicles with positive-ignition engines

With effect from 1 January 2000 for new types and from 1 January 2001 for all types, vehicles of category M1, except vehicles the maximum mass of which exceeds 2500 kg, and vehicles of category N1 class I, must be fitted with an on-board diagnostic (OBD) system for emission control in accordance with Annex XI. [...]

Note that here "European Union" means countries which were members of the EU in 2000.

2004 or newer model year diesel vehicle sold in the European Union

Commission Directive 70/220/EEC, Annex I:

Vehicles with compression-ignition engines

Vehicles of category M1, except

- vehicles designed to carry more than six occupants including the driver,

- vehicles whose maximum mass exceeds 2500 kg,

from 1 January 2003 for new types and from 1 January 2004 for all

types, must be fitted with an on-board diagnostic (OBD) system for emission control in accordance with Annex XI.

Note that here "European Union" means countries which were members of the EU in 2003.

Other vehicles

If your vehicle does not fall into any of the above categories, look under the hood and try to locate a label (Fig. 1) that explicitly states that the vehicle was designed to comply with OBD-II legislation.

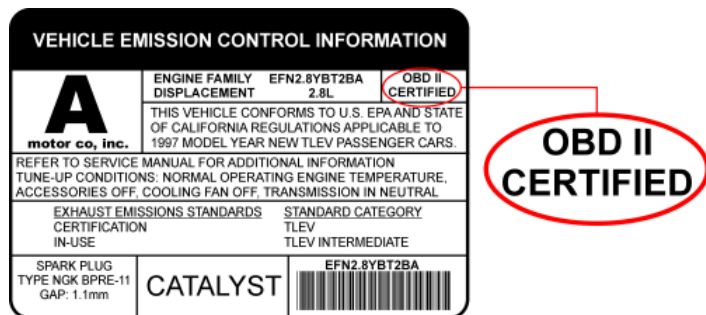


Fig. 1 - Vehicle Emission Control Information Label

In this case, OBD-II is used as a general term and can mean any of the following:

OBD II (California ARB)

EOBD (European OBD)

JOBD (Japanese OBD)

You may also consult your vehicle's owner's manual and perhaps contact your local dealer. However, be aware of the fact that many dealers do not know the difference between OBD and OBD-II.

If the vehicle is not OBD-II compliant, you cannot use a generic OBD-II scan tool such as U380 to obtain diagnostic information from your vehicle.

But my car has the 16-pin OBD connector, shouldn't it be OBD-II compliant?

No, not necessarily. A lot of European and Asian manufacturers equipped their vehicles with D-shaped 16-pin connectors long before they began installing OBD-II systems on those vehicles. One curious thing to note here is the fact that most non-EOBD compliant vehicles had a DLC that does not fully conform to SAE J1979. Compare figures 2 and 3, and notice the "ears" on the non-EOBD compliant Ford Focus.

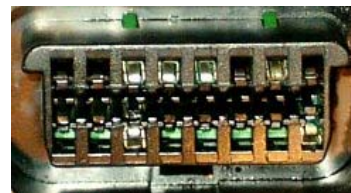


Fig. 2 - Ford Escort DLC

(courtesy of [DigitalFriction](#), UK)

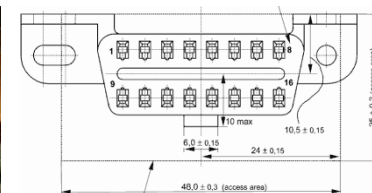


Fig. 3 - J1962 Vehicle Connector, Type A

(courtesy of [SAE](#))

2.3 Which OBD-II protocol is supported by my vehicle?

All cars and light trucks built for sale in the United States after 1996 are required to be OBD-II compliant. The European Union OBD legislation is somewhat more complicated.

An OBD-II compliant vehicle can use any of the five communication protocols: J1850 PWM, J1850 VPW, ISO9141-2, ISO14230-4 (also known as Keyword Protocol 2000), and more recently, ISO15765-4/SAE J2480 (a "flavor" of CAN). US car manufacturers were not allowed to use CAN until model year 2003.

There are two types of diagnostic link connectors (DLCs) defined by SAE J1962 - Type A and Type B, shown in Figures 2 and 3, respectively. The main difference between the two connectors is in the shape of the alignment tab.

Location - According to J1962, Type A DLC "shall be located in the passenger or driver's compartment in the area bounded by the

driver's end of the instrument panel to 300 mm (~1 ft) beyond the vehicle centerline, attached to the instrument panel and easy to access from the driver's seat. The preferred location is between the steering column and the vehicle centerline."

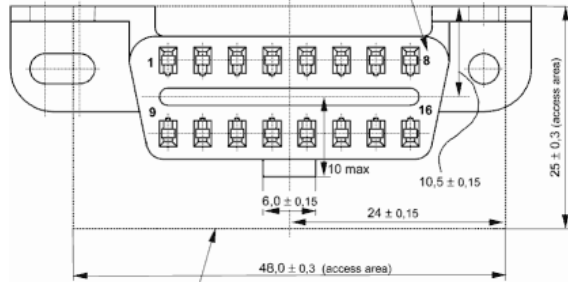


Fig. 1 - J1962 Vehicle Connector, Type A

(courtesy of SAE)

Type B DLC "shall be located in the passenger or driver's compartment in the area bounded by the driver's end of the instrument panel, including the outer side, and an imagined line 750 mm (~2.5 ft) beyond the vehicle centerline. It shall be attached to the instrument panel and easy to access from the driver's seat or from the Co-drivers seat or from the outside. The vehicle connector shall be mounted to facilitate mating and unmating."

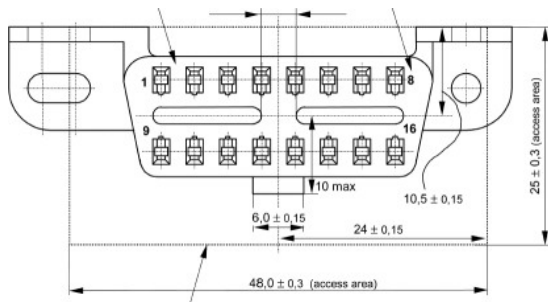


Fig. 2 - J1962 Vehicle Connector, Type B

(courtesy of SAE)

As a general rule, you can determine which protocol your vehicle is using by looking at the pinout of the DLC:

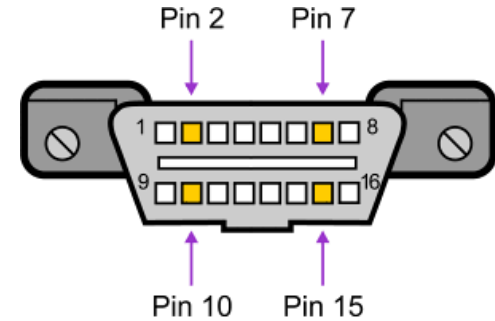


Fig. 3

The following table explains how to determine the protocol:

Pin 2	Pin 6	Pin 7	Pin 10	Pin 14	Pin 15	Standard
must have			must have			J1850 PWM
must have						J1850 VPW
		must have			may have*	ISO9141/14230
	must have			must have		ISO15765 (CAN)

*Pin 15 (also called the "L-line") is optional in newer vehicles that use the ISO9141-2 or ISO14230-4 protocols.

In addition to pins 2, 7, 10, and 15, the connector should have pins 4 (Chassis Ground), 5 (Signal Ground), and 16 (Battery Positive). This means that:

PWM The connector must have pins 2, 4, 5, 10, and 16

VPW The connector must have pins 2, 4, 5, and 16, *but not* 10.

ISO The connector must have pins 4, 5, 7, and 16. Pin 15 may or may not be present.

CAN The connector must have pins 4, 5, 6, 14, and 16.

3. Product Information

3.1 Tool Description



1. LCD DISPLAY- Shows the test results. there is a backlit 2-line display with 8 characters on each line
2. ENTER BUTTON-Confirms a selection of a menu list, or returns to the main menu.
3. SCROLL BUTTON-Scrolls through menu items or cancel an operation
- 4.MANUAL BOOK-search the codes by the manual book
- 5.OBD II CONNECTOR-Connects the U380 to the vehicle's Data Link Connector (DLC).

3.2 Product Specifications

- **Display**-Backlit LCD, 2 lines, 8 characters each.
- **Operating Temperature**- 0 to 48°C (- 32 to 118.4°F)
- **Power**- DC12V provided via the vehicle's battery
- **Dimensions:**

85mm Length 75mm Width 20mm Height

3.3 Product Features

- Works on all 1996 and newer cars & light trucks that are OBD II compliant (including the VPW, PWM, ISO, KWP 2000)
- Reads and clears generic and manufacturer specific Diagnostic Trouble Codes (DTCs)
- Retrieves VIN (Vehicle Identification No.) on 2002 and newer vehicles that support Mode 9
- Stand-alone unit with no need for an additional laptop computer to operate
- Safely communicates with the on-board computer
- No batteries needed-powered via diagnostic socket.

4. Operating Instructions

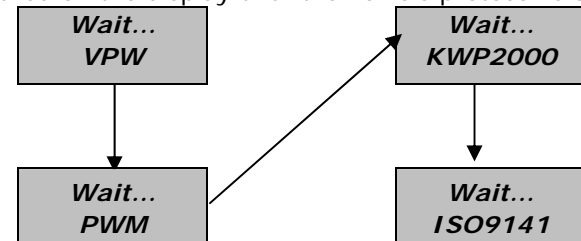
4.1 Reading Codes

CAUTION: Don't connect or disconnect any test equipment with ignition or engine running.

1. Turn the ignition off
2. Locate the 16-pin Data Link Connector (DLC), and plug into the cable connector to the DLC.
3. Wait for the LCD display "MEMOSCAN U380"

**MEMOSCAN
U380**

4. Turn the ignition on. Needn't start the engine.
5. Press the ENTER button, messages showing the protocols well be appeared on the display until the vehicle protocol is detected



Not all the above protocols will be displayed, They will stop appearing after the vehicle protocol is detected

- If a "LINKING ERROR!" message shows, turn the ignition off, check if the U380 connector is closely connected to the vehicle's diagnostic socket, and then turn the ignition back to on.. If the "LINKING ERROR" message still shows, there may be the problems for U380 communicate with the vehicle.

6. when it enter, it will display results with the total number of DTCs and the I/M Monitor Status.

DTC:09
IM:YES

7. Select "DTC" from the menu by pressing the ENTER button.

MENU:
1.DTC

If there are no Diagnostic Trouble Codes, it will indicate "NO CODES"

NO
CODES

If there are any Diagnostic Trouble Codes, then the total number of the Fault Codes will be reported on the display.

FAULT:07
PEND:02

8. Read the Diagnostic Trouble Codes by pressing the "SCROLL" button.

4.2 Erasing Codes:

CAUTION: if you plan to take the a Service Center for repair, DO Not erase the codes from the vehicles' computer. If the codes are erased valuable information that might help the technician troubleshoot the problem will also be erased.

1. If you decide to erase the codes, Select "2. ERASE" from the menu by pressing the ENTER button.

MENU:
2.ERASE

2. A message of "ERASE? YES NO" comes up asking for your confirmation.

ERASED?
YES NO

3. If you do not want to erase the codes, press the "SCROLL" button to exit

4. If you want to erase the codes, press the **ENTER** button.

5. If the codes are cleared successfully, an "ERASE DONE!" message will show on the display, Press the ENTER button to Return to the main Menu.

ERASE
DONE!

6. If the trouble codes are not cleared, then an "ERASE FAIL" message will show. Press the "ENTER" button to Return to the main Menu.

ERASE
FAIL!

4.3 I/M readiness testing

I/M is an Inspection and Maintenance program legistated by the Government to meet federal clean-air standards..

- "YES"- All monitors can be tested on the vehicle MIL light is not on
- "NO"-At least one monitor on the vehicle wasn't tested ,the "Check Engine" (MIL) light is on
- "READY"-shows that a monitor being checked has completed its diagnostic testing.
- "NOT RDY(NOT READY)"-shows that a monitor being tested has not completed its diagnostic testing.
- "N/A"-The monitor is not supported on that vehicle

- “→”-A flashing Right Arrow indicates additional information is available on the next screen
 - “←”- A flashing Left Arrow indicates more information is available on the previous screen
1. Select “3. I/M” from the main menu by pressing the ENTER button.

MENU:
3. I/M

2. Use the SCROLL button to view the status of the MIL light (“ON” or “OFF”)
3. Press the ENTER button to return to the main Menu.

4.4 Viewing VIN Number

1. Select “4. VIN” from the main menu via pressing the “ENTER” button.

MENU:
4. VIN

2. Use the SCROLL button to view additional digits of the 17-digit string..

4.5 Rescan Data

1. Select “5. RESCAN” from the main menu via pressing the ENTER button.

MENU:
5. RESCAN

2. Use either the “SCROLL” or “ENTER” button to return to the main menu.

5. Diagnostic Trouble Code (DTC) Definitions

The following Generic Diagnostic Trouble Codes.

OBDII Generic DTC Definitions

P0001	Generic	Fuel Volume Regulator Control Circuit Open
P0002	Generic	Fuel Volume Regulator Control Circuit Range/Performance
P0003	Generic	Fuel Volume Regulator Control Circuit Low
P0004	Generic	Fuel Volume Regulator Control Circuit High
P0005	Generic	Fuel Shutoff Valve. A Control Circuit Open
P0006	Generic	Fuel Shutoff Valve. A Control Circuit Low
P0007	Generic	Fuel Shutoff Valve. A Control Circuit High
P0008	Generic	Engine Position System Performance (Bank 1)
P0009	Generic	Engine Position System Performance (Bank 2)
P0010	Generic	Camshaft Position Actuator A-Bank 1 Circuit Malfunction
P0011	Generic	Camshaft Position Actuator A-Bank 1 Timing Over-Advanced
P0012	Generic	Camshaft Position Actuator A-Bank 1 Timing Over-Retarded
P0013	Generic	Camshaft Position Actuator B-Bank 1 Circuit Malfunction
P0014	Generic	Camshaft Position Actuator B-Bank 1 Timing Over-Advanced
P0015	Generic	Camshaft Position Actuator B-Bank 1 Timing Over-Retarded
P0016	Generic	Cam/Crankshaft Pos. Correlation Sensor A-Bank 1
P0017	Generic	Cam/Crankshaft Pos. Correlation Sensor B-Bank 1
P0018	Generic	Cam/Crankshaft Pos. Correlation Sensor A-Bank 2
P0019	Generic	Cam/Crankshaft Pos. Correlation Sensor B-Bank 2
P0020	Generic	Camshaft Position Actuator A-Bank 2 Circuit Malfunction
P0021	Generic	Camshaft Position Actuator A-Bank 2 Timing Over-Advanced
P0022	Generic	Camshaft Position Actuator A-Bank 2 Timing Over-retarded
P0023	Generic	Camshaft Position Actuator B-Bank 2 Circuit Malfunction
P0024	Generic	Camshaft Position Actuator B-Bank 2 Timing Over-Advanced
P0025	Generic	Camshaft Position Actuator B-Bank 2 Timing Over-Retarded
P0026	Generic	Intake Valve-Bank 1 Control Solenoid CKT Range/ Performance
P0027	Generic	Exhaust Valve-Bank 1 Control Solenoid CKT Range/ Performance
P0028	Generic	Intake Valve-Bank 2 Control Solenoid CKT Range/Performance
P0029	Generic	Exhaust Valve-Bank 2 Control Solenoid CKT Range/ Performance
P0030	Generic	HO2S Bank 1 sensor 1 Heater Circuit
P0031	Generic	HO2S Bank 1 sensor 1 Heater Circuit Low
P0032	Generic	HO2S Bank 1 sensor 1 Heater Circuit High

P0033	Generic	Turbo/Sup Wastegate control Circuit
P0034	Generic	Turbo/Sup Wastegate control Circuit Low
P0035	Generic	Turbo/Sup Wastegate control Circuit High
P0036	Generic	HO2S Bank 1 sensor 2 Heater Circuit
P0037	Generic	HO2S Bank 1 sensor 2 Heater Circuit Low
P0038	Generic	HO2S Bank 1 sensor 2 Heater Circuit High
P0039	Generic	Turbo/Super Charger Bypass Control CKT Performance
P0040	Generic	O2 Bank 1 Sensor 1 Signals Swapped w/ O2 Bank 2 Sensor 1
P0041	Generic	O2 Bank 1 Sensor 2 Signals Swapped w/ O2 Bank 2 Sensor 2
P0042	Generic	HO2S Bank 1 sensor 3 Heater Circuit
P0043	Generic	HO2S Bank 1 sensor 3 Heater Circuit Low
P0044	Generic	HO2S Bank 1 sensor 3 Heater Circuit High
P0045	Generic	Turbo/Super Charger Boost Control Solenoid A Circuit Open
P0046	Generic	Turbo/Super Charger Boost Control Solenoid A Circuit
P0047	Generic	Turbo/Super Charger Boost Control Solenoid A Circuit Low
P0048	Generic	Turbo/Super Charger Boost Control Solenoid A Circuit High
P0049	Generic	Turbo/Super Charger Boost Input/Turbine Speed Overspeed
P0050	Generic	HO2S Bank 2 sensor 1 Heater Circuit
P0051	Generic	HO2S Bank 2 sensor 1 Heater Circuit Low
P0052	Generic	HO2S Bank 2 sensor 1 Heater Circuit High
P0053	Generic	HO2S Bank 1 sensor 1 Heater Resistance
P0054	Generic	HO2S Bank 1 sensor 2 Heater Resistance
P0055	Generic	HO2S Bank 1 sensor 3 Heater Resistance
P0056	Generic	HO2S Bank 2 sensor 2 Heater Circuit
P0057	Generic	HO2S Bank 2 sensor 2 Heater Circuit Low
P0058	Generic	HO2S Bank 2 sensor 2 Heater Circuit High
P0059	Generic	HO2S Bank 2 Sensor 1 Heater Resistance
P0060	Generic	HO2S Bank 2 Sensor 2 Heater Resistance
P0061	Generic	HO2S Bank 2 Sensor 3 Heater Resistance
P0062	Generic	HO2S Bank 2 sensor 3 Heater Circuit
P0063	Generic	HO2S Bank 2 sensor 3 Heater Circuit Low
P0064	Generic	HO2S Bank 2 sensor 3 Heater Circuit High

P0065	Generic	Air Assisted Injector. Control Range/Performance
P0066	Generic	Air Assisted Injector. Control Circuit Low
P0067	Generic	Air Assisted Injector. Control Circuit High
P0068	Generic	MAF/MAP Sensor Throttle Position Correlation
P0069	Generic	MAP/BARO Correlation
P0070	Generic	Ambient Air Temp. Sensor Circuit
P0071	Generic	Ambient Air Temp. Sensor Range/Performance
P0072	Generic	Ambient Air Temp. Sensor Circuit Low
P0073	Generic	Ambient Air Temp. Sensor Circuit High
P0074	Generic	Ambient Air Temp. Sensor CKT Intermittent
P0075	Generic	Intake Valve-Bank 1 Control Circuit
P0076	Generic	Intake Valve-Bank 1 Control Circuit Low
P0077	Generic	Intake Valve-Bank 1 Control Circuit High
P0078	Generic	Exhaust Valve-Bank 1 control Circuit
P0079	Generic	Exhaust Valve-Bank 1 control Circuit Low
P0080	Generic	Exhaust Valve-Bank 1 control Circuit High
P0081	Generic	Intake Valve-Bank 2 Control Circuit
P0082	Generic	Intake Valve-Bank 2 Control Circuit Low
P0083	Generic	Intake Valve-Bank 2 Control Circuit High
P0084	Generic	Exhaust Valve-Bank 2 Control Circuit
P0085	Generic	Exhaust Valve-Bank 2 Control Circuit Low
P0086	Generic	Exhaust Valve-Bank 2 Control Circuit High
P0087	Generic	Fuel Rail Pressure Too Low
P0088	Generic	Fuel Rail Pressure Too High
P0089	Generic	Fuel Pressure Regulator 1 Performance
P0090	Generic	Fuel Pressure Regulator 1 Control Circuit
P0091	Generic	Fuel Pressure Regulator 1 Control Circuit Low
P0092	Generic	Fuel Pressure Regulator 1 Control Circuit High
P0093	Generic	Fuel System Leak (Large)
P0094	Generic	Fuel System Leak (Small)
P0095	Generic	IAT Sensor 2 Circuit
P0096	Generic	IAT Sensor 2 CKT Range/Performance

P0097	Generic	IAT Sensor 2 Circuit Low
P0098	Generic	IAT Sensor 2 Circuit High
P0099	Generic	IAT Sensor 2 CKT Intermittent
P0100	Generic	MAF or VAF A Circuit Malfunction
P0101	Generic	MAF or VAF A Circuit Range/Performance
P0102	Generic	MAF or VAF A Circuit Low Input
P0103	Generic	MAF or VAF A Circuit High Input
P0104	Generic	MAF or VAF A Circuit Intermittent
P0105	Generic	MAP/BARO Circuit Malfunction
P0106	Generic	MAP/BARO CKT Range/Performance
P0107	Generic	MAP/BARO Circuit Low Input
P0108	Generic	MAP/BARO Circuit High Input
P0109	Generic	MAP/BARO CKT Intermittent
P0110	Generic	IAT Sensor Circuit Malfunction
P0111	Generic	IAT Sensor 1 CKT Range/Performance
P0112	Generic	IAT Sensor 1 Circuit Low Input
P0113	Generic	IAT Sensor 1 Circuit High Input
P0114	Generic	IAT Sensor 1 CKT Intermittent
P0115	Generic	Engine Coolant Temp Circuit Malfunction
P0116	Generic	Engine Coolant Temp CKT Range/Performance
P0117	Generic	Engine Coolant Temp Circuit Low Input
P0118	Generic	Engine Coolant Temp Circuit High Input
P0119	Generic	Engine Coolant Temp CKT Intermittent
P0120	Generic	TPS/Pedal Position Sensor A Circuit Malfunction
P0121	Generic	TPS/Pedal Position Sensor A CKT Range/Performance
P0122	Generic	TPS/Pedal Position Sensor A Circuit Low Input
P0123	Generic	TPS/Pedal Position Sensor A Circuit High Input
P0124	Generic	TPS/Pedal Position Sensor A CKT Intermittent
P0125	Generic	Closed Loop Fuel Ctrl Insufficient Coolant Temp
P0126	Generic	Coolant Temp Insufficient Stable Operation
P0127	Generic	IAT Sensor Too High
P0128	Generic	Coolant Temp Below Thermostat Regulating Temp

P0129	Generic	Barometric Pressure Too Low
P0130	Generic	O2 Sensor Circuit Malfunction (Bank 1 Sensor 1)
P0131	Generic	O2 Sensor Circuit Low Volts (Bank 1 Sensor 1)
P0132	Generic	O2 Sensor Circuit High Volts (Bank 1 Sensor 1)
P0133	Generic	O2 Sensor CKT Slow Response (Bank 1 Sensor 1)
P0134	Generic	O2 Sensor CKT No Activity (Bank 1 Sensor 1)
P0135	Generic	O2 Sensor Heater Circuit Malfunction (Bank 1 Sensor 1)
P0136	Generic	O2 Sensor Circuit Malfunction (Bank 1 Sensor 2)
P0137	Generic	O2 Sensor Circuit Low Volts (Bank 1 Sensor 2)
P0138	Generic	O2 Sensor Circuit High Volts (Bank 1 Sensor 2)
P0139	Generic	O2 Sensor CKT Slow response (Bank 1 Sensor 2)
P0140	Generic	O2 Sensor CKT No Activity (Bank 1 Sensor 2)
P0141	Generic	O2 Sensor Heater Circuit Malfunction (Bank 1 Sensor 2)
P0142	Generic	O2 Sensor Circuit Malfunction (Bank 1 Sensor 3)
P0143	Generic	O2 Sensor Circuit Low Volts (Bank 1 Sensor 3)
P0144	Generic	O2 Sensor Circuit High Volts (Bank 1 Sensor 3)
P0145	Generic	O2 Sensor CKT Slow Response (Bank 1 Sensor 3)
P0146	Generic	O2 Sensor CKT No Activity (Bank 1 Sensor 3)
P0147	Generic	O2 Sensor Heater Circuit Malfunction (Bank 1 Sensor 3)
P0148	Generic	Fuel Delivery Malfunction
P0149	Generic	Fuel Timing Malfunction
P0150	Generic	O2 Sensor Circuit Malfunction (Bank 2 Sensor 1)
P0151	Generic	O2 Sensor Circuit Low Volts (Bank 2 Sensor 1)
P0152	Generic	O2 Sensor Circuit High Volts (Bank 2 Sensor 1)
P0153	Generic	O2 Sensor CKT Slow Response (Bank 2 Sensor 1)
P0154	Generic	O2 Sensor CKT No Activity (Bank 2 Sensor 1)
P0155	Generic	O2 Sensor Heater Circuit Malfunction (Bank 2 Sensor 1)
P0156	Generic	O2 Sensor Circuit Malfunction (Bank 2 Sensor 2)
P0157	Generic	O2 Sensor Circuit Low Volts (Bank 2 Sensor 2)
P0158	Generic	O2 Sensor Circuit High Volts (Bank 2 Sensor 2)
P0159	Generic	O2 Sensor CKT Slow Response (Bank 2 Sensor 2)
P0160	Generic	O2 Sensor CKT No Activity (Bank 2 Sensor 2)

P0161	Generic	O2 Sensor Heater Circuit Malfunction (Bank 2 Sensor 2)
P0162	Generic	O2 Sensor Circuit Malfunction (Bank 2 Sensor 3)
P0163	Generic	O2 Sensor Circuit Low Volts (Bank 2 Sensor 3)
P0164	Generic	O2 Sensor Circuit High Volts (Bank 2 Sensor 3)
P0165	Generic	O2 Sensor CKT Slow Response (Bank 2 Sensor 3)
P0166	Generic	O2 Sensor CKT No Activity (Bank 2 Sensor 3)
P0167	Generic	O2 Sensor Heater Circuit Malfunction (Bank 2 Sensor 3)
P0168	Generic	Engine Fuel Temperature Too High
P0169	Generic	Fuel Composition Incorrect
P0170	Generic	Fuel Trim malfunction (Bank1)
P0171	Generic	System Too Lean (Bank 1)
P0172	Generic	System Too Rich (Bank 1)
P0173	Generic	Fuel Trim Malfunction (Bank 2)
P0174	Generic	System Too Lean (Bank 2)
P0175	Generic	System Too Rich (Bank 2)
P0176	Generic	Fuel Compensation Sensor Circuit Malfunction
P0177	Generic	Fuel Compensation Sensor CKT Range/Performance
P0178	Generic	Fuel Compensation Sensor Circuit Low Input
P0179	Generic	Fuel Compensation Sensor Circuit High Input
P0180	Generic	Fuel Temperature Sensor A Circuit Malfunction
P0181	Generic	Fuel Temperature Sensor A CKT Range/Performance
P0182	Generic	Fuel Temperature Sensor A Circuit Low Input
P0183	Generic	Fuel Temperature Sensor A Circuit High Input
P0184	Generic	Fuel Temperature Sensor A CKT Intermittent
P0185	Generic	Fuel Temperature Sensor B Circuit Malfunction
P0186	Generic	Fuel Temperature Sensor B CKT Range/Performance
P0187	Generic	Fuel Temperature Sensor B Circuit Low Input
P0188	Generic	Fuel Temperature Sensor B Circuit High Input
P0189	Generic	Fuel Temperature Sensor B CKT Intermittent
P0190	Generic	Fuel Rail Pressure Sensor Circuit Malfunction
P0191	Generic	Fuel Rail Pressure Sensor CKT Range/Performance
P0192	Generic	Fuel Rail Pressure Sensor Circuit Low Input

P0193	Generic	Fuel Rail Pressure Sensor Circuit High Input
P0194	Generic	Fuel Rail Pressure Sensor CKT Intermittent
P0195	Generic	Engine Oil Temp Sensor Circuit Malfunction
P0196	Generic	Engine Oil Temp Sensor CKT Range/Performance
P0197	Generic	Engine Oil Temp Sensor Circuit Low Input
P0198	Generic	Engine Oil Temp Sensor Circuit High Input
P0199	Generic	Engine Oil Temp Sensor CKT Intermittent
P0200	Generic	Injector Circuit Open
P0201	Generic	Injector Circuit Open Cylinder 1
P0202	Generic	Injector Circuit Open Cylinder 2
P0203	Generic	Injector Circuit Open Cylinder 3
P0204	Generic	Injector Circuit Open Cylinder 4
P0205	Generic	Injector Circuit Open Cylinder 5
P0206	Generic	Injector Circuit Open Cylinder 6
P0207	Generic	Injector Circuit Open Cylinder 7
P0208	Generic	Injector Circuit Open Cylinder 8
P0209	Generic	Injector Circuit Open Cylinder 9
P0210	Generic	Injector Circuit Open Cylinder 10
P0211	Generic	Injector Circuit Open Cylinder 11
P0212	Generic	Injector Circuit Open Cylinder 12
P0213	Generic	Cold Start Injection 1 Malfunction
P0214	Generic	Cold Start Injection 2 Malfunction
P0215	Generic	Engine Shutoff Solenoid Malfunction
P0216	Generic	Injection Timing Control Circuit Malfunction
P0217	Generic	Engine Overtemp Condition
P0218	Generic	Transmission Overtemp Condition
P0219	Generic	Engine Overspeed Condition
P0220	Generic	TPS/Pedal Position Sensor/Switch B Circuit Malfunction
P0221	Generic	TPS/Pedal Position Sensor/Switch B CKT Range/Performance
P0222	Generic	TPS/Pedal Position Sensor/Switch B Circuit Low Input
P0223	Generic	TPS/Pedal Position Sensor/Switch B Circuit High Input
P0224	Generic	TPS/Pedal Position Sensor/Switch B CKT Intermittent

P0225	Generic	TPS/Pedal Position Sensor/Switch C Circuit Malfunction
P0226	Generic	TPS/Pedal Position Sensor/Switch C CKT Range/Performance
P0227	Generic	TPS/Pedal Position Sensor/Switch C Circuit Low Input
P0228	Generic	TPS/Pedal Position Sensor/Switch C Circuit High Input
P0229	Generic	TPS/Pedal Position Sensor/Switch C CKT Intermittent
P0230	Generic	Fuel Pump Primary Circuit Malfunction
P0231	Generic	Fuel Pump Secondary Circuit Low
P0232	Generic	Fuel Pump Secondary Circuit High
P0233	Generic	Fuel Pump Secondary Circuit Intermittent Ckt
P0234	Generic	Engine Overboost Condition
P0235	Generic	Turbo/Super Boost Sensor A Circuit Malfunction
P0236	Generic	Turbo/Super Boost Sensor A CKT Range/Performance
P0237	Generic	Turbo/Super Boost Sensor A Circuit Low Input
P0238	Generic	Turbo/Super Boost Sensor A Circuit High Input
P0239	Generic	Turbo/Super Boost Sensor B Circuit Malfunction
P0240	Generic	Turbo/Super Boost Sensor B CKT Range/Performance
P0241	Generic	Turbo/Super Boost Sensor B Circuit Low Input
P0242	Generic	Turbo/Super Boost Sensor B Circuit High Input
P0243	Generic	Turbo/Sup Wastegate Solenoid A Malfunction
P0244	Generic	Turbo/Sup Wastegate Solenoid A Range/Performance
P0245	Generic	Turbo/Sup Wastegate Solenoid A Low
P0246	Generic	Turbo/Sup Wastegate Solenoid A High
P0247	Generic	Turbo/Sup Wastegate Solenoid B Malfunction
P0248	Generic	Turbo/Sup Wastegate Solenoid B Range/Performance
P0249	Generic	Turbo/Sup Wastegate Solenoid B Low
P0250	Generic	Turbo/Sup Wastegate Solenoid B High
P0251	Generic	Injection Pump Metering Control A
P0252	Generic	Injection Pump Metering Control A Range/Performance
P0253	Generic	Injection Pump Metering Control A Low
P0254	Generic	Injection Pump Metering Control A High
P0255	Generic	Injection Pump Metering Control A Intermittent (Cam/Rotor/Injector)
P0256	Generic	Injection Pump Metering Control B Malfunction (Cam/Rotor/Injector)

P0257	Generic	Injection Pump Metering Control A Range/Performance (Cam/Rotor/Injector)
P0258	Generic	Injection Pump Metering Control B Low (Cam/Rotor/Injector)
P0259	Generic	Injection Pump Metering Control B High (Cam/Rotor/Injector)
P0260	Generic	Injection Pump Metering Control B Intermittent (Cam/Rotor/Injector)
P0261	Generic	Cylinder 1 Injector Control Circuit Low
P0262	Generic	Cylinder 1 Injector Control Circuit High
P0263	Generic	Cylinder 1 Contribution Balance Fault
P0264	Generic	Cylinder 2 Injector Control Circuit Low
P0265	Generic	Cylinder 2 Injector Control Circuit High
P0266	Generic	Cylinder 2 Contribution Balance Fault
P0267	Generic	Cylinder 3 Injector Control Circuit Low
P0268	Generic	Cylinder 3 Injector Control Circuit High
P0269	Generic	Cylinder 3 Contribution Balance Fault
P0270	Generic	Cylinder 4 Injector Control Circuit Low
P0271	Generic	Cylinder 4 Injector Control Circuit High
P0272	Generic	Cylinder 4 Contribution Balance Fault
P0273	Generic	Cylinder 5 Injector Control Circuit Low
P0274	Generic	Cylinder 5 Injector Control Circuit High
P0275	Generic	Cylinder 5 Contribution Balance Fault
P0276	Generic	Cylinder 6 Injector Control Circuit Low
P0277	Generic	Cylinder 6 Injector Control Circuit High
P0278	Generic	Cylinder 6 Contribution Balance Fault
P0279	Generic	Cylinder 7 Injector Control Circuit Low
P0280	Generic	Cylinder 7 Injector Control Circuit High
P0281	Generic	Cylinder 7 Contribution Balance Fault
P0282	Generic	Cylinder 8 Injector Control Circuit Low
P0283	Generic	Cylinder 8 Injector Control Circuit High
P0284	Generic	Cylinder 8 Contribution Balance Fault
P0285	Generic	Cylinder 9 Injector Control Circuit Low
P0286	Generic	Cylinder 9 Injector Control Circuit High
P0287	Generic	Cylinder 9 Contribution Balance Fault
P0288	Generic	Cylinder 10 Injector Control Circuit Low

P0289	Generic	Cylinder 10 Injector Control Circuit High
P0290	Generic	Cylinder 10 Contribution Balance Fault
P0291	Generic	Cylinder 11 Injector Control Circuit Low
P0292	Generic	Cylinder 11 Injector Control Circuit High
P0293	Generic	Cylinder 11 Contribution Balance Fault
P0294	Generic	Cylinder 12 Injector Control Circuit Low
P0295	Generic	Cylinder 12 Injector Control Circuit High
P0296	Generic	Cylinder 12 Contribution Balance Fault
P0297	Generic	Vehicle Overspeed Error
P0298	Generic	Engine Oil Temperature Too High
P0299	Generic	Turbo/Super Charger Under Boost
P0300	Generic	Random/Multiple Cylinder Misfire
P0301	Generic	Cylinder 1 Misfire Detected
P0302	Generic	Cylinder 2 Misfire Detected
P0303	Generic	Cylinder 3 Misfire Detected
P0304	Generic	Cylinder 4 Misfire Detected
P0305	Generic	Cylinder 5 Misfire Detected
P0306	Generic	Cylinder 6 Misfire Detected
P0307	Generic	Cylinder 7 Misfire Detected
P0308	Generic	Cylinder 8 Misfire Detected
P0309	Generic	Cylinder 9 Misfire Detected
P0310	Generic	Cylinder 10 Misfire Detected
P0311	Generic	Cylinder 11 Misfire Detected
P0312	Generic	Cylinder 12 Misfire Detected
P0313	Generic	Misfire Detected Low Fuel Level
P0314	Generic	Misfire Detected Cyl. not Specific
P0315	Generic	Crankshaft Position System Variation Not Learned
P0316	Generic	Misfire Detected 1st 1000 Revs
P0317	Generic	Rough Road Hardware Not Present
P0318	Generic	Rough Road Sensor A Signal Circuit
P0319	Generic	Rough Road Sensor B
P0320	Generic	Ignition/Dist Engine Speed Input Circuit Malfunction

P0321	Generic	Ignition/Dist Engine Speed Input CKT Range/Performance
P0322	Generic	Ignition/Dist Engine Speed Input Circuit No Signal
P0323	Generic	Ignition/Dist Engine Speed Input CKT Intermittent
P0324	Generic	Knock Control System Malfunction
P0325	Generic	Knock Sensor 1 Circuit Malfunction Bank 1 or 1 Sensor
P0326	Generic	Knock Sensor 1 CKT Range/Performance Bank 1 or 1 Sensor
P0327	Generic	Knock Sensor 1 Circuit Low Input Bank 1 or 1 Sensor
P0328	Generic	Knock Sensor 1 Circuit High Input Bank 1 or 1 Sensor
P0329	Generic	Knock Sensor 1 CKT Intermittent Bank 1 or 1 Sensor
P0330	Generic	Knock Sensor 2 Circuit Malfunction (Bank 2)
P0331	Generic	Knock Sensor 2 Circuit Malfunction (Bank 2)
P0332	Generic	Knock Sensor 2 Circuit Low Input (Bank 2)
P0333	Generic	Knock Sensor 2 Circuit High Input (Bank 2)
P0334	Generic	Knock Sensor 2 CKT Intermittent (Bank 2)
P0335	Generic	Crankshaft Position Sensor A Circuit Malfunction
P0336	Generic	Crankshaft Position Sensor A CKT Range/Performance
P0337	Generic	Crankshaft Position Sensor A Circuit Low Input
P0338	Generic	Crankshaft Position Sensor A Circuit High Input
P0339	Generic	Crankshaft Position Sensor A CKT Intermittent
P0340	Generic	Camshaft Position Sensor A-Bank 1 Circuit Malfunction
P0341	Generic	Camshaft Position Sensor A-Bank 1 CKT Range/Performance
P0342	Generic	Camshaft Position Sensor A-Bank 1 Circuit Low Input
P0343	Generic	Camshaft Position Sensor A-Bank 1 Circuit High Input
P0344	Generic	Camshaft Position Sensor A-Bank 1 CKT Intermittent
P0345	Generic	Camshaft Position Sensor A-Bank 2 Circuit Malfunction
P0346	Generic	Camshaft Position Sensor A-Bank 2 CKT Range/Performance
P0347	Generic	Camshaft Position Sensor A-Bank 2 Circuit Low Input
P0348	Generic	Camshaft position Sensor A-Bank 2 Circuit High Input
P0349	Generic	Camshaft Position Sensor A-Bank 2 CKT Intermittent
P0350	Generic	Ignition Coil Primary/Secondary Circuit Malfunction
P0351	Generic	Ignition Coil A Primary/Secondary Circuit Malfunction
P0352	Generic	Ignition Coil B Primary/Secondary Circuit Malfunction

P0353	Generic	Ignition Coil C Primary/Secondary Circuit Malfunction
P0354	Generic	Ignition Coil D Primary/Secondary Circuit Malfunction
P0355	Generic	Ignition Coil E Primary/Secondary Circuit Malfunction
P0356	Generic	Ignition Coil F Primary/Secondary Circuit Malfunction
P0357	Generic	Ignition Coil G Primary/Secondary Circuit Malfunction
P0358	Generic	Ignition Coil H Primary/Secondary Circuit Malfunction
P0359	Generic	Ignition Coil I Primary/Secondary Circuit Malfunction
P0360	Generic	Ignition Coil G Primary/Secondary Circuit Malfunction
P0361	Generic	Ignition Coil K Primary/Secondary Circuit Malfunction
P0362	Generic	Ignition Coil L Primary/Secondary Circuit Malfunction
P0363	Generic	Misfire Detected Fueling Disabled
P0365	Generic	Camshaft Position Sensor B-Bank 1 Circuit Malfunction
P0366	Generic	Camshaft Position Sensor B-Bank 1 CKT Range/Performance
P0367	Generic	Camshaft Position Sensor B-Bank 1 Circuit Low Input
P0368	Generic	Camshaft position Sensor B-Bank 1 Circuit High Input
P0369	Generic	Camshaft Position Sensor B-Bank 1 CKT Intermittent
P0370	Generic	Timing Reference High resolution Signal A Malfunction
P0371	Generic	Timing Reference High resolution Signal A Too Many Pulses
P0372	Generic	Timing Reference High resolution Signal A Too Few Pulses
P0373	Generic	Timing Reference High resolution Signal A Erratic Pluses
P0374	Generic	Timing Reference High resolution Signal A No Pulses
P0375	Generic	Timing Reference High resolution Signal B Malfunction
P0376	Generic	Timing Reference High resolution Signal B Too Many Pulses
P0377	Generic	Timing Reference High resolution Signal B Too Few Pulses
P0378	Generic	Timing Reference High resolution Signal B Erratic Pluses
P0379	Generic	Timing Reference High resolution Signal B No Pulses
P0380	Generic	Glow Plug/Heater CKT A Malfunction
P0381	Generic	Glow Plug/Heater Indicator Circuit Malfunction
P0382	Generic	Glow Plug/Heater CKT B Malfunction
P0383	Generic	Glow Plug Module Control Circuit Low
P0384	Generic	Glow Plug Module Control Circuit High
P0385	Generic	Crankshaft Position Sensor B Circuit Malfunction

P0386	Generic	Crankshaft Position Sensor B CKT Range/Performance
P0387	Generic	Crankshaft Position Sensor B Circuit Low Input
P0388	Generic	Crankshaft Position Sensor B Circuit High Input
P0389	Generic	Crankshaft Position Sensor B CKT Intermittent
P0390	Generic	Camshaft Position Sensor B-Bank 2 Circuit Malfunction
P0391	Generic	Camshaft Position Sensor B-Bank 2 CKT Range/Performance
P0392	Generic	Camshaft Position Sensor B-Bank 2 Circuit Low Input
P0393	Generic	Camshaft position Sensor B-Bank 2 Circuit High Input
P0394	Generic	Camshaft Position Sensor B-Bank 2 CKT Intermittent
P0400	Generic	EGR Flow Malfunction
P0401	Generic	EGR Flow Insufficient
P0402	Generic	EGR Flow Excessive
P0403	Generic	EGR Flow Circuit Malfunction
P0404	Generic	EGR Flow CKT Range/Performance
P0405	Generic	EGR Flow Sensor A Circuit Low Input
P0406	Generic	EGR Flow Sensor A Circuit High Input
P0407	Generic	EGR Flow Sensor B Circuit Low Input
P0408	Generic	EGR Flow Sensor B Circuit High Input
P0409	Generic	EGR Flow Sensor A Circuit
P0410	Generic	Secondary Air Infection System Malfunction
P0411	Generic	Secondary Air Infection System Incorrect Flow
P0412	Generic	Secondary Air Infection System Valve A Malfunction
P0413	Generic	Secondary Air Infection System Valve A CKT Open
P0414	Generic	Secondary Air Infection System Valve A CKT Short
P0415	Generic	Secondary Air Infection System Valve B Malfunction
P0416	Generic	Secondary Air Infection System Valve B CKT Open
P0417	Generic	Secondary Air Infection System Valve B CKT Short
P0418	Generic	Secondary Air Infection System Relay A Malfunction
P0419	Generic	Secondary Air Infection System Relay B Malfunction
P0420	Generic	Catalyst Efficiency Below Threshold (Bank 1)
P0421	Generic	Warm Up Catalyst Below Threshold (Bank 1)
P0422	Generic	Main Catalyst Below Threshold (Bank 1)

P0423	Generic	Heated Catalyst Below Threshold (Bank 1)
P0424	Generic	Heated Catalyst Temp Below Threshold (Bank 1)
P0425	Generic	Catalyst Temp. Sensor (Bank 1 Sensor 1)
P0426	Generic	Catalyst Temp. Sensor Performance (Bank 1 Sensor 1)
P0427	Generic	Catalyst Temp. Sensor Circuit Low (Bank 1 Sensor 1)
P0428	Generic	Catalyst Temp. Sensor Circuit High (Bank 1 Sensor 1)
P0429	Generic	Catalyst Heater Control (Bank 1)
P0430	Generic	Catalyst Efficiency Below Threshold (Bank 2)
P0431	Generic	Warm Up Catalyst Below Threshold (Bank 2)
P0432	Generic	Main Catalyst Below Threshold (Bank 2)
P0433	Generic	Heated Catalyst Below Threshold (Bank 2)
P0434	Generic	Heated Catalyst Temp Below Threshold (Bank 2)
P0435	Generic	Catalyst Temp. Sensor (Bank 2 Sensor 1)
P0436	Generic	Catalyst Temp. Sensor Performance (Bank 2 Sensor 1)
P0437	Generic	Catalyst Temp. Sensor Circuit Low (Bank 2 Sensor 1)
P0438	Generic	Catalyst Temp. Sensor Circuit High (Bank 2 Sensor 1)
P0439	Generic	Catalyst Heater Control (Bank 2)
P0440	Generic	EVAP Emission Control System Malfunction
P0441	Generic	EVAP Emission Control System Purge Flow Fault
P0442	Generic	EVAP Emission Control System Leak (Small)
P0443	Generic	EVAP Emission Control System Purge Valve C Fault
P0444	Generic	EVAP Emission Control System Purge Valve C Open
P0445	Generic	EVAP Emission Control System Purge Valve C Short
P0446	Generic	EVAP Emission Control System Vent Circuit Malf
P0447	Generic	EVAP Emission Control System Vent Circuit Open
P0448	Generic	EVAP Emission Control System Vent Circuit Short
P0449	Generic	EVAP Emission Control System Vent Vlv/Sol Malf
P0450	Generic	EVAP Emission Control System Pres Sensor Fault
P0451	Generic	EVAP Emission Control System Pres Sensor Range
P0452	Generic	EVAP Emission Control System Pres Sensor Low
P0453	Generic	EVAP Emission Control System Pres Sensor High
P0454	Generic	EVAP Emission Control System Pres Sensor Erratic

P0455	Generic	EVAP Emission Control System Leak (Large)
P0456	Generic	EVAP Emission Control System Leak Very Small
P0457	Generic	EVAP Emission Control System Leak Cap Loose/Off
P0458	Generic	EVAP System Canister Purge Sol Circuit Low
P0459	Generic	EVAP System Canister Purge Sol Circuit High
P0460	Generic	Fuel Level Sensor A Circuit Malfunction
P0461	Generic	Fuel Level Sensor A CKT Range/Performance
P0462	Generic	Fuel Level Sensor A Circuit Low Input
P0463	Generic	Fuel Level Sensor A Circuit High Input
P0464	Generic	Fuel Level Sensor A CKT Intermittent
P0465	Generic	EVAP Emission Purge Flow Sensor Circuit Malfunction
P0466	Generic	EVAP Emission Purge Flow Sensor CKT Range/Performance
P0467	Generic	EVAP Emission Purge Flow Sensor Circuit Low Input
P0468	Generic	EVAP Emission Purge Flow Sensor Circuit High Input
P0469	Generic	EVAP Emission Purge Flow Sensor CKT Intermittent
P0470	Generic	Exhaust Pressure Sensor Circuit Malfunction
P0471	Generic	Exhaust Pressure Sensor CKT Range/Performance
P0472	Generic	Exhaust Pressure Sensor Circuit Low Input
P0473	Generic	Exhaust Pressure Sensor Circuit High Input
P0474	Generic	Exhaust Pressure Sensor CKT Intermittent
P0475	Generic	Exhaust Pressure Control Valve Circuit Malfunction
P0476	Generic	Exhaust Pressure Control Valve CKT Range/Performance
P0477	Generic	Exhaust Pressure Control Valve Circuit Low Input
P0478	Generic	Exhaust Pressure Control Valve Circuit High Input
P0479	Generic	Exhaust Pressure Control Valve CKT Intermittent
P0480	Generic	Cooling Fan 1 Control Circuit
P0481	Generic	Cooling Fan 2 Control Circuit
P0482	Generic	Cooling Fan 3 Control Circuit
P0483	Generic	Control Fan Rationality Check Malfunction
P0484	Generic	Control Fan CKT Over Current
P0485	Generic	Control Fan Power/Ground Circuit Malfunction
P0486	Generic	EGR System Sensor B Circuit

P0487	Generic	EGR TPS Control Circuit
P0488	Generic	EGR TPS Control CKT Range/Performance
P0489	Generic	EGR Control Circuit Low
P0490	Generic	EGR Control Circuit High
P0491	Generic	Secondary Air System (Bank 1)
P0492	Generic	Secondary Air System (Bank 2)
P0493	Generic	Fan Speed Overspeed
P0494	Generic	Fan Speed Low
P0495	Generic	Fan Speed High
P0496	Generic	EVAP Emission High Purge Flow Fault
P0497	Generic	EVAP Emission Low Purge Flow Fault
P0498	Generic	EVAP Emission Vent Vlv/Sol Malf Circuit Low
P0499	Generic	EVAP Emission Vent Vlv/Sol Malf Circuit High
P0500	Generic	Vehicle Speed Sensor A Malfunction
P0501	Generic	Vehicle Speed Sensor A Range/Performance
P0502	Generic	Vehicle Speed Sensor A Circuit Low Input
P0503	Generic	Vehicle Speed Sensor A Erratic/High
P0504	Generic	Brake Switch A Brake Switch B Correlation
P0505	Generic	Idle Control System Malfunction
P0506	Generic	Idle Control System RPM Low
P0507	Generic	Idle Control System RPM High
P0508	Generic	Idle Control System Circuit Low
P0509	Generic	Idle Control System Circuit High
P0510	Generic	Closed Throttle Position Switch
P0511	Generic	Idle Air Control Circuit
P0512	Generic	Starter Signal Circuit
P0513	Generic	Immobilizer Incorrect
P0514	Generic	Battery Temperature Sensor CKT Range/Performance
P0515	Generic	Battery Temperature Sensor Circuit
P0516	Generic	Battery Temperature Circuit Low
P0517	Generic	Battery Temperature Circuit High
P0518	Generic	Idle Air Control CKT intermittent

P0519	Generic	Idle Air Control System Performance
P0520	Generic	Engine Oil Pressure Sensor/Switch Circuit Malfunction
P0521	Generic	Engine Oil Pressure Sensor/Switch Range/Performance
P0522	Generic	Engine Oil Pressure Sensor/Switch Low Voltage
P0523	Generic	Engine Oil Pressure Sensor/Switch High Voltage
P0524	Generic	Engine Oil Pressure Too Low
P0525	Generic	Cruise Servo CKT Range/Performance
P0526	Generic	Fan Speed Sensor Circuit
P0527	Generic	Fan Speed Sensor CKT Range/Performance
P0528	Generic	Fan Speed Sensor Circuit No Signal
P0529	Generic	Fan Speed Sensor CKT Intermittent
P0530	Generic	A/C Refrigerant Pressure Sensor A Circuit Malfunction
P0531	Generic	A/C Refrigerant Pressure Sensor A CKT Range/Performance
P0532	Generic	A/C Refrigerant Pressure Sensor A Circuit Low Input
P0533	Generic	A/C Refrigerant Pressure Sensor A Circuit High Input
P0534	Generic	A/C Refrigerant Charge Loss
P0535	Generic	A/C Evaporator Temperature Sensor Circuit
P0536	Generic	A/C Evaporator Temperature Sensor CKT Range/Performance
P0537	Generic	A/C Evaporator Temperature Sensor Circuit Low
P0538	Generic	A/C Evaporator Temperature Sensor Circuit High
P0539	Generic	A/C Evaporator Temperature Sensor CKT Intermittent
P0540	Generic	Intake Air Heater A Circuit
P0541	Generic	Intake Air Heater A Circuit Low
P0542	Generic	Intake Air Heater A Circuit High
P0543	Generic	Intake Air Heater A Circuit Open
P0544	Generic	Exhaust Gas Temp. Sensor Circuit (Bank 1 Sensor 1)
P0545	Generic	Exhaust Gas Temp. Sensor Circuit Low (Bank 1 Sensor 1)
P0546	Generic	Exhaust Gas Temp. Sensor Circuit High (Bank 1 Sensor 1)
P0547	Generic	Exhaust Gas Temp. Sensor Circuit (Bank 2 Sensor 1)
P0548	Generic	Exhaust Gas Temp. Sensor Circuit Low (Bank 2 Sensor 1)
P0549	Generic	Exhaust Gas Temp. Sensor Circuit High (Bank 2 Sensor 1)
P0550	Generic	Power Steering Pres Sensor Circuit Malfunction

P0551	Generic	Power Steering Pres Sensor CKT Range/Performance
P0552	Generic	Power Steering Pres Sensor Circuit Low Input
P0553	Generic	Power Steering Pres Sensor Circuit High Input
P0554	Generic	Power Steering Pres Sensor CKT Intermittent
P0555	Generic	Brake Booster Pressure Sensor Circuit
P0556	Generic	Brake Booster Pressure Sensor CKT Range/Performance
P0557	Generic	Brake Booster Pressure Sensor Circuit Low Input
P0558	Generic	Brake Booster Pressure Sensor Circuit High Input
P0559	Generic	Brake Booster Pressure Sensor CKT Intermittent
P0560	Generic	System Voltage malfunction
P0561	Generic	System Voltage Unstable
P0562	Generic	System Voltage Low
P0563	Generic	System Voltage High
P0564	Generic	Cruise Control Multi-Function. Input A Signal Error
P0565	Generic	Cruise Control On Signal Malfunction
P0566	Generic	Cruise control off Signal Malfunction
P0567	Generic	Cruise Control Resume Signal Malfunction
P0568	Generic	Cruise Control Resume Signal Malfunction
P0569	Generic	Cruise Control Coast Signal Malfunction
P0570	Generic	Cruise Control Acceleration Signal Error
P0571	Generic	Brake Switch A Circuit Malfunction
P0572	Generic	Brake Switch A Circuit Low Input
P0573	Generic	Brake Switch A Circuit High Input
P0574	Generic	Cruise Control Vehicle Speed Too High
P0575	Generic	Cruise Control Circuit Malfunction
P0576	Generic	Cruise Control Circuit Low Input
P0577	Generic	Cruise Control Circuit High Input
P0578	Generic	Cruise Control Multi-Function input A Circuit Stuck
P0579	Generic	Cruise Control Multi-Function input A CKT Range/Performance
P0580	Generic	Cruise Control Multi-Function input A Circuit Low
P0581	Generic	Cruise Control Multi-Function input A Circuit High
P0582	Generic	Cruise Control Vacuum Control Circuit Open

P0583	Generic	Cruise Control Vacuum Control Circuit Low
P0584	Generic	Cruise Control Vacuum Control Circuit High
P0585	Generic	Cruise Control Multi-Function Input Correlation
P0586	Generic	Cruise Control Vent Control Circuit Open
P0587	Generic	Cruise Control Vent Control Circuit Low
P0588	Generic	Cruise Control Vent Control Circuit High
P0589	Generic	Cruise Control Multi-Function Input B Circuit
P0590	Generic	Cruise Control Multi-Function Input B Circuit Stuck
P0591	Generic	Cruise Control Multi-Function Input B CKT Range/Performance
P0592	Generic	Cruise Control Multi-Function Input B Circuit Low
P0593	Generic	Cruise Control Multi-Function Input B Circuit High
P0594	Generic	Cruise Control Servo Control Circuit Open
P0595	Generic	Cruise Control Servo Control Circuit Low
P0596	Generic	Cruise Control Servo Control Circuit High
P0597	Generic	Cruise control Circuit Open
P0598	Generic	Cruise control Circuit Low
P0599	Generic	Cruise control Circuit High
P0600	Generic	Serial Communication Link Malfunction
P0601	Generic	Internal Control Module Memory Check Sum Error
P0602	Generic	Control Module Programming Error
P0603	Generic	Powertrain Control Module Keep Alive Memory (KAM) Error
P0604	Generic	Powertrain Control Module Random Access Memory (RAM) Error
P0605	Generic	Powertrain Control Module Read Only Memory (ROM) Error
P0606	Generic	ECM / PCM Processor
P0607	Generic	Control Module Performance
P0608	Generic	Powertrain Control Module Vehicle Speed Output A
P0609	Generic	Powertrain Control Module Vehicle Speed Output B
P0610	Generic	Control Module Vehicle Options Error
P0611	Generic	Fuel Injector Control Module Performance
P0612	Generic	Fuel Injector Control Module Relay Control Circuit
P0613	Generic	TCM Processor
P0614	Generic	ECM / TCM Mismatch

P0615	Generic	Starter Relay Circuit
P0616	Generic	Starter Relay Circuit Low
P0617	Generic	Starter Relay Circuit High
P0618	Generic	Alternative Fuel Control Module KAM Error
P0619	Generic	Alternative Fuel Control Module RAM/ROM Error
P0620	Generic	Generator Control Circuit
P0621	Generic	Generator Lamp Terminal Circuit
P0622	Generic	Generator Field Terminal Circuit
P0623	Generic	Generator Lamp Control Circuit
P0624	Generic	Fuel Cap Lamp Control Circuit
P0625	Generic	Generator Field Terminal Circuit Low
P0626	Generic	Generator Field Terminal Circuit High
P0627	Generic	Fuel Pump Control Circuit / Open
P0628	Generic	Fuel Pump Control Circuit Low
P0629	Generic	Fuel Pump Control Circuit High
P0630	Generic	VIN Not Programmed or Mismatch - ECM/PCM
P0631	Generic	VIN Not Programmed or Mismatch - TCM
P0632	Generic	Odometer Not Programmed - ECM/PCM
P0633	Generic	Immobilizer Key Not Programmed - ECM/PCM
P0634	Generic	PCM / ECM / TCM Internal Temperature Too High
P0635	Generic	Power Steering Control Circuit
P0636	Generic	Power Steering Control Circuit Low
P0637	Generic	Power Steering Control Circuit High
P0638	Generic	Throttle Actuator Control Range/Performance - Bank 1
P0639	Generic	Throttle Actuator Control Range/Performance - Bank 2
P0640	Generic	Intake Air Heater Control Circuit
P0641	Generic	Sensor Reference Voltage A Circuit/Open
P0642	Generic	Sensor Reference Voltage A Circuit Low
P0643	Generic	Sensor Reference Voltage A Circuit High
P0644	Generic	Driver Display Serial Communication Circuit
P0645	Generic	A/C Clutch Relay Control Circuit
P0646	Generic	A/C Clutch Relay Control Circuit Low

P0647	Generic	A/C Clutch Relay Control Circuit High
P0648	Generic	Immobilizer Lamp Control Circuit
P0649	Generic	Cruise Control Lamp Control Circuit
P0650	Generic	Malfunction Indicator Light Control Circuit
P0651	Generic	Sensor Reference Voltage B Circuit/Open
P0652	Generic	Sensor Reference Voltage B Circuit Low
P0653	Generic	Sensor Reference Voltage B Circuit High
P0654	Generic	Engine RPM Output Circuit
P0655	Generic	Engine Hot Lamp Output Control Circuit
P0656	Generic	Fuel level Output Circuit
P0657	Generic	Actuator Supply Voltage Circuit / Open
P0658	Generic	Actuator Supply Voltage Circuit Low
P0659	Generic	Actuator Supply Voltage Circuit High
P0660	Generic	Intake Manifold Tuning Valve Control Circuit / Open - Bank 1
P0661	Generic	Intake Manifold Tuning Valve Control Circuit Low - Bank 1
P0662	Generic	Intake Manifold Tuning Valve Control Circuit High - Bank 1
P0663	Generic	Intake Manifold Tuning Valve Control Circuit / Open - Bank 2
P0664	Generic	Intake Manifold Tuning Valve Control Circuit Low - Bank 2
P0665	Generic	Intake Manifold Tuning Valve Control Circuit High - Bank 2
P0666	Generic	PCM / ECM / TCM Internal Temperature Sensor Circuit
P0667	Generic	PCM / ECM / TCM Internal Temperature Sensor Range/Performance
P0668	Generic	PCM / ECM / TCM Internal Temperature Sensor Circuit Low
P0669	Generic	PCM / ECM / TCM Internal Temperature Sensor Circuit High
P0670	Generic	Glow Plug Module Control Circuit
P0671	Generic	Cylinder 1 Glow Plug Circuit
P0672	Generic	Cylinder 2 Glow Plug Circuit
P0673	Generic	Cylinder 3 Glow Plug Circuit
P0674	Generic	Cylinder 4 Glow Plug Circuit
P0675	Generic	Cylinder 5 Glow Plug Circuit
P0676	Generic	Cylinder 6 Glow Plug Circuit
P0677	Generic	Cylinder 7 Glow Plug Circuit
P0678	Generic	Cylinder 8 Glow Plug Circuit

P0679	Generic	Reserve for future glow plugs 9-12
P0680	Generic	Reserve for future glow plugs 9-12
P0681	Generic	Reserve for future glow plugs 9-12
P0682	Generic	Reserve for future glow plugs 9-12
P0683	Generic	Glow Plug Control Module to PCM Communication Circuit
P0684	Generic	Glow Plug Control Module to PCM Communication Circuit Range/Performance
P0685	Generic	ECM/PCM Power Relay Control Circuit/Open
P0686	Generic	ECM/PCM Power Relay Control Circuit Low
P0687	Generic	ECM/PCM Power Relay Control Circuit High
P0688	Generic	ECM/PCM Power Relay Sense Circuit Open
P0689	Generic	ECM/PCM Power Relay Sense Circuit Low
P0690	Generic	ECM/PCM Power Relay Sense Circuit High
P0691	Generic	Fan 1 Control Circuit Low
P0692	Generic	Fan 1 Control Circuit High
P0693	Generic	Fan 2 Control Circuit Low
P0694	Generic	Fan 2 Control Circuit High
P0695	Generic	Fan 3 Control Circuit Low
P0696	Generic	Fan 3 Control Circuit High
P0697	Generic	Sensor Reference Voltage C Circuit / Open
P0698	Generic	Sensor Reference Voltage C Circuit Low
P0699	Generic	Sensor Reference Voltage C Circuit High
P0700	Generic	Transmission Control System (MIL Request)
P0701	Generic	Transmission Control System Range/Performance
P0702	Generic	Transmission Control System Electrical
P0703	Generic	Brake Switch B Input Circuit
P0704	Generic	Clutch Switch Input Circuit
P0705	Generic	Transmission Range Sensor Circuit (PRNDL Input)
P0706	Generic	Transmission Range Sensor Circuit Range/Performance
P0707	Generic	Transmission Range Sensor Circuit Low Input
P0708	Generic	Transmission Range Sensor Circuit High Input
P0709	Generic	Transmission Range Sensor Circuit Intermittent
P0710	Generic	Transmission Fluid Temperature Sensor A Circuit

P0711	Generic	Transmission Fluid Temperature Sensor A Circuit Range/Performance
P0712	Generic	Transmission Fluid Temperature Sensor A Circuit Low Input
P0713	Generic	Transmission Fluid Temperature Sensor A Circuit High Input
P0714	Generic	Transmission Fluid Temperature Sensor A Circuit Intermittent
P0715	Generic	Turbine/Input Shaft Speed Sensor Circuit
P0716	Generic	Turbine/Input Shaft Speed Sensor Circuit Range/Performance
P0717	Generic	Turbine/Input Shaft Speed Sensor Circuit No Signal
P0718	Generic	Turbine/Input Shaft Speed Sensor Circuit Intermittent
P0719	Generic	Brake Switch B Input Circuit Low
P0720	Generic	Output Shaft Speed Sensor Circuit
P0721	Generic	Output Shaft Speed Sensor Circuit Range/Performance
P0722	Generic	Output Shaft Speed Sensor Circuit No Signal
P0723	Generic	Output Shaft Speed Sensor Circuit Intermittent
P0724	Generic	Brake Switch B Input Circuit High
P0725	Generic	Engine Speed Input Circuit
P0726	Generic	Engine Speed Input Circuit Range/Performance
P0727	Generic	Engine Speed Input Circuit No Signal
P0728	Generic	Engine Speed Input Circuit Intermittent
P0729	Generic	Gear 6 Incorrect Ratio
P0730	Generic	Incorrect Gear Ratio
P0731	Generic	Gear 1 Incorrect Ratio
P0732	Generic	Gear 2 Incorrect Ratio
P0733	Generic	Gear 3 Incorrect Ratio
P0734	Generic	Gear 4 Incorrect Ratio
P0735	Generic	Gear 5 Incorrect Ratio
P0736	Generic	Reverse Incorrect Ratio
P0737	Generic	TCM Engine Speed Output Circuit
P0738	Generic	TCM Engine Speed Output Circuit Low
P0739	Generic	TCM Engine Speed Output Circuit High
P0740	Generic	Torque Converter Clutch Solenoid Circuit
P0741	Generic	Torque Converter Clutch Solenoid Circuit Performance Or Stuck
P0742	Generic	Torque Converter Clutch Solenoid Circuit Stuck On

P0743	Generic	Torque Converter Clutch Solenoid Circuit Electrical
P0744	Generic	Torque Converter Clutch Solenoid Circuit Intermittent
P0745	Generic	Pressure Control Solenoid A
P0746	Generic	Pressure Control Solenoid A Performance or Stuck Off
P0747	Generic	Pressure Control Solenoid A Stuck On
P0748	Generic	Pressure Control Solenoid A Electrical
P0749	Generic	Pressure Control Solenoid A Intermittent
P0750	Generic	Shift Solenoid A
P0751	Generic	Shift Solenoid A Performance or Stuck Off
P0752	Generic	Shift Solenoid A Stuck On
P0753	Generic	Shift Solenoid A Electrical
P0754	Generic	Shift Solenoid A Intermittent
P0755	Generic	Shift Solenoid B
P0756	Generic	Shift Solenoid B Performance or Stuck Off
P0757	Generic	Shift Solenoid B Stuck On
P0758	Generic	Shift Solenoid B Electrical
P0759	Generic	Shift Solenoid B Intermittent
P0760	Generic	Shift Solenoid C
P0761	Generic	Shift Solenoid C Performance or Stuck Off
P0762	Generic	Shift Solenoid C Stuck On
P0763	Generic	Shift Solenoid C Electrical
P0764	Generic	Shift Solenoid C Intermittent
P0765	Generic	Shift Solenoid D
P0766	Generic	Shift Solenoid D Performance or Stuck Off
P0767	Generic	Shift Solenoid D Stuck On
P0768	Generic	Shift Solenoid D Electrical
P0769	Generic	Shift Solenoid D Intermittent
P0770	Generic	Shift Solenoid E
P0771	Generic	Shift Solenoid E Performance or Stuck Off
P0772	Generic	Shift Solenoid E Stuck On
P0773	Generic	Shift Solenoid E Electrical
P0774	Generic	Shift Solenoid E Intermittent

P0775	Generic	Pressure Control Solenoid B
P0776	Generic	Pressure Control Solenoid B Performance or Stuck Off
P0777	Generic	Pressure Control Solenoid B Stuck On
P0778	Generic	Pressure Control Solenoid B Electrical
P0779	Generic	Pressure Control Solenoid B Intermittent
P0780	Generic	Shift Malfunction
P0781	Generic	1-2 Shift
P0782	Generic	2-3 Shift
P0783	Generic	3-4 Shift
P0784	Generic	4-5 Shift
P0785	Generic	Shift/Timing Solenoid
P0786	Generic	Shift/Timing Solenoid Range/Performance
P0787	Generic	Shift/Timing Solenoid Low
P0788	Generic	Shift/Timing Solenoid High
P0789	Generic	Shift/Timing Solenoid Intermittent
P0790	Generic	Normal/Performance Switch Circuit
P0791	Generic	Intermediate Shaft Speed Sensor A Circuit
P0792	Generic	Intermediate Shaft Speed Sensor A Circuit Range/Performance
P0793	Generic	Intermediate Shaft Speed Sensor A Circuit No Signal
P0794	Generic	Intermediate Shaft Speed Sensor A Circuit Intermittent
P0795	Generic	Pressure Control Solenoid C
P0796	Generic	Pressure Control Solenoid C Performance or Stuck Off
P0797	Generic	Pressure Control Solenoid C Stuck On
P0798	Generic	Pressure Control Solenoid C Electrical
P0799	Generic	Pressure Control Solenoid C Intermittent
P0800	Generic	Transmission Control System (MIL Request)
P0800	Generic	Transmission / Transfer Case Control System (MIL Request)
P0801	Generic	Reverse Inhibit Control Circuit
P0802	Generic	Transmission Control System MIL Request Circuit / Open
P0803	Generic	1-4 Upshift (skip shift) Solenoid Circuit
P0804	Generic	1-4 Upshift (skip shift) Lamp Control Circuit
P0805	Generic	Clutch Position Sensor Circuit

P0806	Generic	Clutch Position Sensor Circuit Range/Performance
P0807	Generic	Clutch Position Sensor Circuit Low
P0808	Generic	Clutch Position Sensor Circuit High
P0809	Generic	Clutch Position Sensor Circuit Intermittent
P0810	Generic	Clutch Position Control Error
P0811	Generic	Excessive Clutch Slippage
P0812	Generic	Reverse Input Circuit
P0813	Generic	Reverse Output Circuit
P0814	Generic	Transmission Range Display Circuit
P0815	Generic	Upshift Switch Circuit
P0816	Generic	Downshift Switch Circuit
P0817	Generic	Starter Disable Circuit
P0818	Generic	Driveline Disconnect Switch Input Circuit
P0819	Generic	Up and Down Shift Switch to Transmission Range Correlation
P0820	Generic	Gear Lever X-Y Position Sensor Circuit
P0821	Generic	Gear Lever X Position Sensor Circuit
P0822	Generic	Gear Lever Y Position Sensor Circuit
P0823	Generic	Gear Lever X Position Sensor Circuit Intermittent
P0824	Generic	Gear Lever Y Position Sensor Circuit Intermittent
P0825	Generic	Gear Lever Push/Pull Switch Circuit (Shift Anticipate)
P0826	Generic	Up and Down Switch Input Circuit
P0827	Generic	Up and Down Switch Input Circuit Low
P0828	Generic	Up and Down Switch Input Circuit High
P0829	Generic	5-6 Shift
P0830	Generic	Clutch Pedal Switch A Circuit
P0831	Generic	Clutch Pedal Switch A Circuit Low
P0832	Generic	Clutch Pedal Switch A Circuit High
P0833	Generic	Clutch Pedal Switch B Circuit
P0834	Generic	Clutch Pedal Switch B Circuit Low
P0835	Generic	Clutch Pedal Switch B Circuit High
P0836	Generic	Four Wheel Drive (4WD) Switch Circuit
P0837	Generic	Four Wheel Drive (4WD) Switch Circuit Range/Performance

P0838	Generic	Four Wheel Drive (4WD) Switch Circuit Low
P0839	Generic	Four Wheel Drive (4WD) Switch Circuit High
P0840	Generic	Transmission Fluid Pressure Sensor/Switch A Circuit
P0841	Generic	Transmission Fluid Pressure Sensor/Switch A Circuit Range/Performance
P0842	Generic	Transmission Fluid Pressure Sensor/Switch A Circuit Low
P0843	Generic	Transmission Fluid Pressure Sensor/Switch A Circuit High
P0844	Generic	Transmission Fluid Pressure Sensor/Switch A Circuit Intermittent
P0845	Generic	Transmission Fluid Pressure Sensor/Switch B Circuit
P0846	Generic	Transmission Fluid Pressure Sensor/Switch B Circuit Range/Performance
P0847	Generic	Transmission Fluid Pressure Sensor/Switch B Circuit Low
P0848	Generic	Transmission Fluid Pressure Sensor/Switch B Circuit High
P0849	Generic	Transmission Fluid Pressure Sensor/Switch B Circuit Intermittent
P0850	Generic	Park / Neutral Switch Input Circuit
P0851	Generic	Park / Neutral Switch Input Circuit Low
P0852	Generic	Park / Neutral Switch Input Circuit High
P0853	Generic	Drive Switch Input Circuit
P0854	Generic	Drive Switch Input Circuit Low
P0855	Generic	Drive Switch Input Circuit High
P0856	Generic	Traction Control Input Signal
P0857	Generic	Traction Control Input Signal Range/Performance
P0858	Generic	Traction Control Input Signal Low
P0859	Generic	Traction Control Input Signal High
P0860	Generic	Gear Shift Module Communication Circuit
P0861	Generic	Gear Shift Module Communication Circuit Low
P0862	Generic	Gear Shift Module Communication Circuit High
P0863	Generic	TCM Communication Circuit
P0864	Generic	TCM Communication Circuit Range/Performance
P0865	Generic	TCM Communication Circuit Low
P0866	Generic	TCM Communication Circuit High
P0867	Generic	Transmission Fluid Pressure
P0868	Generic	Transmission Fluid Pressure Low
P0869	Generic	Transmission Fluid Pressure High

P0870	Generic	Transmission Fluid Pressure Sensor/Switch C Circuit
P0871	Generic	Transmission Fluid Pressure Sensor/Switch C Circuit Range/Performance
P0872	Generic	Transmission Fluid Pressure Sensor/Switch C Circuit Low
P0873	Generic	Transmission Fluid Pressure Sensor/Switch C Circuit High
P0874	Generic	Transmission Fluid Pressure Sensor/Switch C Circuit Intermittent
P0875	Generic	Transmission Fluid Pressure Sensor/Switch D Circuit
P0876	Generic	Transmission Fluid Pressure Sensor/Switch D Circuit Range/Performance
P0877	Generic	Transmission Fluid Pressure Sensor/Switch D Circuit Low
P0878	Generic	Transmission Fluid Pressure Sensor/Switch D Circuit High
P0879	Generic	Transmission Fluid Pressure Sensor/Switch D Circuit Intermittent
P0880	Generic	TCM Power Input Signal
P0881	Generic	TCM Power Input Signal Range/Performance
P0882	Generic	TCM Power Input Signal Low
P0883	Generic	TCM Power Input Signal High
P0884	Generic	TCM Power Input Signal Intermittent
P0885	Generic	TCM Power Relay Control Circuit /Open
P0886	Generic	TCM Power Relay Control Circuit Low
P0887	Generic	TCM Power Relay Control Circuit High
P0888	Generic	TCM Power Relay Sense Circuit
P0889	Generic	TCM Power Relay Sense Circuit Range/Performance
P0890	Generic	TCM Power Relay Sense Circuit Low
P0891	Generic	TCM Power Relay Sense Circuit High
P0892	Generic	TCM Power Relay Sense Circuit Intermittent
P0893	Generic	Multiple Gears Engaged
P0894	Generic	Transmission Component Slipping
P0895	Generic	Shift Time Too Short
P0896	Generic	Shift Time Too Long
P0897	Generic	Transmission Fluid Deteriorated
P0898	Generic	Transmission Control System MIL Request Circuit Low
P0899	Generic	Transmission Control System MIL Request Circuit High
P0900	Generic	Clutch Actuator Circuit / Open
P0901	Generic	Clutch Actuator Circuit Range/Performance

P0902	Generic	Clutch Actuator Circuit Low
P0903	Generic	Clutch Actuator Circuit High
P0904	Generic	Gate Select Position Circuit [senses left / right position]
P0905	Generic	Gate Select Position Circuit Range/Performance
P0906	Generic	Gate Select Position Circuit Low
P0907	Generic	Gate Select Position Circuit High
P0908	Generic	Gate Select Position Circuit Intermittent
P0909	Generic	Gate Select Control Error
P0910	Generic	Gate Select Actuator Circuit / Open [left / right motion]
P0911	Generic	Gate Select Actuator Circuit Range/Performance
P0912	Generic	Gate Select Actuator Circuit Low
P0913	Generic	Gate Select Actuator Circuit High
P0914	Generic	Gear Shift Position Circuit [senses forward / rearward position, odd gears]
P0915	Generic	Gear Shift Position Circuit Range/Performance
P0916	Generic	Gear Shift Position Circuit Low
P0917	Generic	Gear Shift Position Circuit High
P0918	Generic	Gear Shift Position Circuit Intermittent
P0919	Generic	Gear Shift Position Control Error
P0920	Generic	Gear Shift Forward Actuator Circuit / Open [forward motion, odd gears, 1,3,5]
P0921	Generic	Gear Shift Forward Actuator Circuit Range/Performance
P0922	Generic	Gear Shift Forward Actuator Circuit Low
P0923	Generic	Gear Shift Forward Actuator Circuit High
P0924	Generic	Gear Shift Reverse Actuator Circuit / Open [rearward motion, even gears, 2,4,6]
P0925	Generic	Gear Shift Reverse Actuator Circuit Range/Performance
P0926	Generic	Gear Shift Reverse Actuator Circuit Low
P0927	Generic	Gear Shift Reverse Actuator Circuit High
P0928	Generic	Gear Shift Lock Solenoid Circuit / Open
P0929	Generic	Gear Shift Lock Solenoid Circuit Range/Performance
P0930	Generic	Gear Shift Lock Solenoid Circuit Low
P0931	Generic	Gear Shift Lock Solenoid Circuit High
P0932	Generic	Hydraulic Pressure Sensor Circuit
P0933	Generic	Hydraulic Pressure Sensor Range/Performance

P0934	Generic	Hydraulic Pressure Sensor Circuit Low Input
P0935	Generic	Hydraulic Pressure Sensor Circuit High Input
P0936	Generic	Hydraulic Pressure Sensor Circuit Intermittent
P0937	Generic	Hydraulic Oil Temperature Sensor Circuit
P0938	Generic	Hydraulic Oil Temperature Sensor Range/Performance
P0939	Generic	Hydraulic Oil Temperature Sensor Circuit Low Input
P0940	Generic	Hydraulic Oil Temperature Sensor Circuit High Input
P0941	Generic	Hydraulic Oil Temperature Sensor Circuit Intermittent
P0942	Generic	Hydraulic Pressure Unit
P0943	Generic	Hydraulic Pressure Unit Cycling Period Too Short
P0944	Generic	Hydraulic Pressure Unit Loss of Pressure
P0945	Generic	Hydraulic Pump Relay Circuit / Open
P0946	Generic	Hydraulic Pump Relay Circuit Range/Performance
P0947	Generic	Hydraulic Pump Relay Circuit Low
P0948	Generic	Hydraulic Pump Relay Circuit High
P0949	Generic	ASM Adaptive Learning Not Done
P0950	Generic	ASM Control Circuit [Up / Down / Auto / etc]
P0951	Generic	ASM Control Circuit Range/Performance
P0952	Generic	ASM Control Circuit Low
P0953	Generic	ASM Control Circuit High
P0954	Generic	ASM Control Circuit Intermittent
P0955	Generic	ASM Mode Circuit [Perf / Winter / Sport / etc]
P0956	Generic	ASM Mode Circuit Range/Performance
P0957	Generic	ASM Mode Circuit Low
P0958	Generic	ASM Mode Circuit High
P0959	Generic	ASM Mode Circuit Intermittent
P0960	Generic	Pressure Control Solenoid A Control Circuit / Open
P0961	Generic	Pressure Control Solenoid A Control Circuit Range/Performance
P0962	Generic	Pressure Control Solenoid A Control Circuit Low
P0963	Generic	Pressure Control Solenoid A Control Circuit High
P0964	Generic	Pressure Control Solenoid B Control Circuit / Open
P0965	Generic	Pressure Control Solenoid B Control Circuit Range/ Performance

P0966	Generic	Pressure Control Solenoid B Control Circuit Low
P0967	Generic	Pressure Control Solenoid B Control Circuit High
P0968	Generic	Pressure Control Solenoid C Control Circuit / Open
P0969	Generic	Pressure Control Solenoid C Control Circuit Range/ Performance
P0970	Generic	Pressure Control Solenoid C Control Circuit Low
P0971	Generic	Pressure Control Solenoid C Control Circuit High
P0972	Generic	Shift Solenoid A Control Circuit Range/Performance
P0973	Generic	Shift Solenoid A Control Circuit Low
P0974	Generic	Shift Solenoid A Control Circuit High
P0975	Generic	Shift Solenoid B Control Circuit Range/Performance
P0976	Generic	Shift Solenoid B Control Circuit Low
P0977	Generic	Shift Solenoid B Control Circuit High
P0978	Generic	Shift Solenoid C Control Circuit Range/Performance
P0979	Generic	Shift Solenoid C Control Circuit Low
P0980	Generic	Shift Solenoid C Control Circuit High
P0981	Generic	Shift Solenoid D Control Circuit Range/Performance
P0982	Generic	Shift Solenoid D Control Circuit Low
P0983	Generic	Shift Solenoid D Control Circuit High
P0984	Generic	Shift Solenoid E Control Circuit Range/Performance
P0985	Generic	Shift Solenoid E Control Circuit Low
P0986	Generic	Shift Solenoid E Control Circuit High
P0987	Generic	Transmission Fluid Pressure Sensor/Switch E Circuit
P0988	Generic	Transmission Fluid Pressure Sensor/Switch E Circuit Range/ Performance
P0989	Generic	Transmission Fluid Pressure Sensor/Switch E Circuit Low
P0990	Generic	Transmission Fluid Pressure Sensor/Switch E Circuit High
P0991	Generic	Transmission Fluid Pressure Sensor/Switch E Circuit Intermittent
P0992	Generic	Transmission Fluid Pressure Sensor/Switch F Circuit
P0993	Generic	Transmission Fluid Pressure Sensor/Switch F Circuit Range/ Performance
P0994	Generic	Transmission Fluid Pressure Sensor/Switch F Circuit Low
P0995	Generic	Transmission Fluid Pressure Sensor/Switch F Circuit High
P0996	Generic	Transmission Fluid Pressure Sensor/Switch F Circuit Intermittent
P0997	Generic	Shift Solenoid F Control Circuit Range/Performance

P0998	Generic	Shift Solenoid F Control Circuit Low
P0999	Generic	Shift Solenoid F Control Circuit High

6. Warranty and Servicing

6.1 One Year Warranty

- 1.U380 warrants to its customers that this product will be free of all defects in materials and workmanship under normal use and maintenance for a period of one (1) year from the date of the original purchase.
2. This warranty does not apply to damages caused by improper use, accident, abuse, lightning , or if the product was altered or repaired by anyone other than the Manufacturer's Service Center.

6.2 Service Procedures

If you have any questions, please contact our local store, distributor or the Service Center

www.uiftech.com